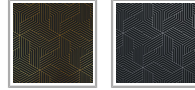




INGRID & MIKA

Geometric Illusions Metallic Wallpaper



ROLL DIMENSIONS	24" (61.5cm) x 33ft (10.05m)
PATTERN REPEAT	21" (53cm)
PATTERN MATCH	Straight Match
FINISH	Pre-trimmed Butt Join
CLEANABILITY	Scrubbable
USAGE	Domestic & Commercial
ADHESIVE	Paste The Wall
REMOVAL	Strippable



BATCHING & DELIVERY

- Note: Samples of this wallcovering are provided for review of the material, pattern scale and print technique – they are not intended to be used for colour matching purposes. There can be slight shifts in colour between runs, so your wallcovering may vary slightly from sample colouring.
- Please ensure that you order the correct amount as we do not guarantee that rolls printed in different batches will be an exact match. Industry leading production times on all orders.

MILTON & KING®

SHOWROOM ADDRESS & OPENING HOURS

Phone: +971 50 700 3762
Villa 3, 103 Jumeirah St
Jumeirah 1, Dubai

GENERAL ENQUIRIES, ORDER & PRODUCTS

+971 50 700 3762
Mon-Fri: 10am-8pm / Sat: 11am-5pm
support@miltonandking.ae
www.miltonandking.ae

Metallic Wallpaper

MILTON & KING®

SHOWROOM ADDRESS & OPENING HOURS

Phone: +971 50 700 3762
Villa 3, 103 Jumeirah St
Jumeirah 1, Dubai

GENERAL ENQUIRIES, ORDER & PRODUCTS

+971 50 700 3762
Mon-Fri: 10am-8pm / Sat: 11am-5pm
support@miltonandking.ae
www.miltonandking.ae

ADDITIONAL INFO

At Milton & King we have a luxury range of metallic wallcoverings designed to bring shimmer, depth and a high-end finish to your space. Whether you're decorating your hallway, living room, bedroom or dining room, metallic wallpaper adds instant impact through its reflective surface and dramatic play with light. Our metallic wallcoverings feature a durable non-woven backing that makes them stable, easy to install, and easier to remove than many specialty substrates. Suitable for domestic and commercial projects, metallic wallpaper is an ideal choice when you want a statement wall with a modern edge, backed by superior customer support and quick delivery times.

Metallic wallpaper important considerations

- **Pre-trimmed Butt Join** – Panels are pre-trimmed for a precise butt join finish. Hang edge-to-edge for a clean result with no overlap.
- **Paste-The-Wall** – Apply adhesive directly to the wall rather than the wallpaper. The non-woven backing remains stable and does not expand, making installation more straightforward and reducing mess.
- **No Booking Required** – Because paste is applied to the wall, there's no need to book panels before hanging, saving time and simplifying handling.
- **Scrubable** – Metallic wallcoverings are scrubable, but use a soft cloth or sponge with mild soap and water. Avoid abrasive pads, harsh chemicals, or heavy rubbing to protect the metallic surface.
- **Good Lightfastness** – Rated for good lightfastness to help maintain appearance in typical interior conditions. As with all wallcoverings, prolonged direct sunlight can affect the look over time.
- **Domestic & Commercial Use** – Suitable for residential spaces and commercial interiors where a premium finish is desired.
- **Humidity & Heat Awareness** – Metallic wallpaper is not recommended for bathrooms, laundries, or consistently humid environments. Moisture and heat can compromise the surface and adhesive performance.
- **Electrical Safety** – Because Metallic Wallpaper can conduct electricity, it is recommended that power be shut off at the breaker during installation to avoid shock. Wait until the wallpaper is dry and trim carefully around power outlets and fixtures so that there is no contact or overlap of metal parts.
- **Handle with Care** – Avoid creasing or folding the wallpaper. Marks and creases can be difficult or impossible to remove because the metallic face reflects imperfections.
- **Strippable Removal** – Designed to be removed in strips under the right conditions, making future updates easier and reducing wall damage compared to more delicate specialty materials.
- **Seams May Be More Visible** – Due to the reflective qualities that give metallic wall coverings their luminous appeal can also make panel transitions more apparent in certain lighting. Experienced installers understand how to work with these materials for a polished result.